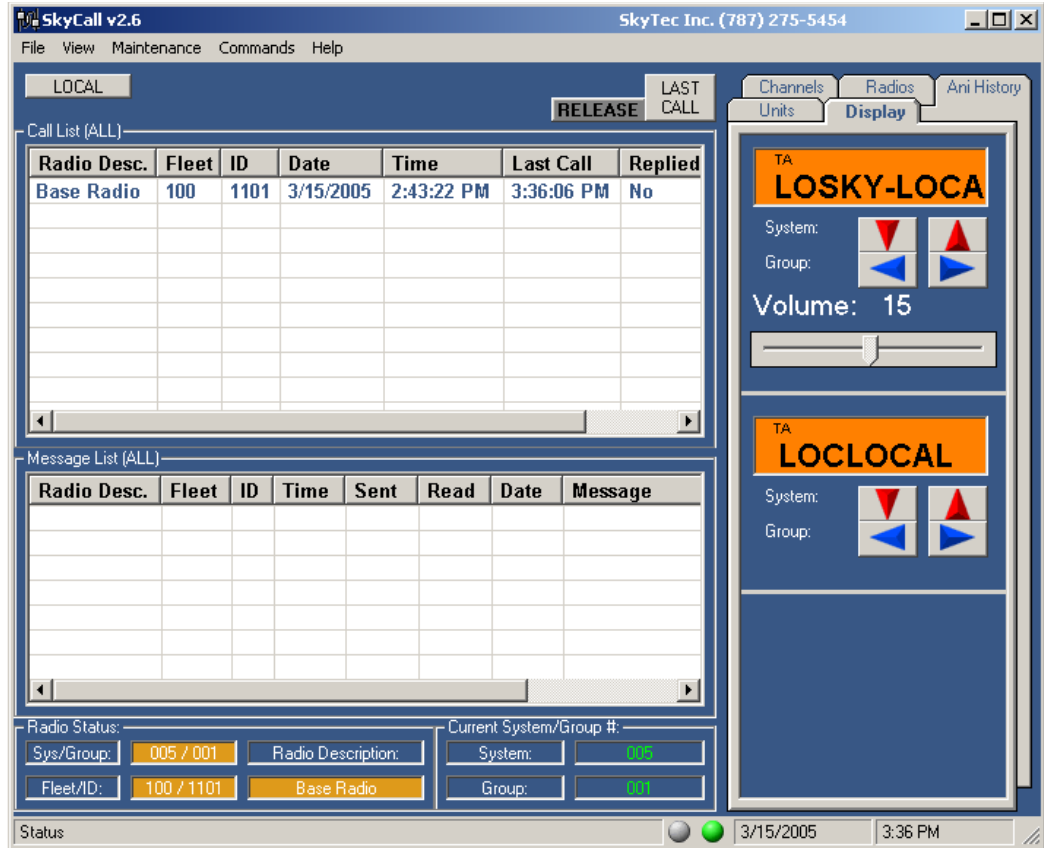


SkyCall is a complete Computer Aided Dispatch (CAD) system. Send / receive text and status messages, monitor incoming calls and transitions using your Kenwood 80-Series base/control station mobile.

Connect up to three (3) radios and turn your desktop into a powerful dispatch tool center.

### Features:

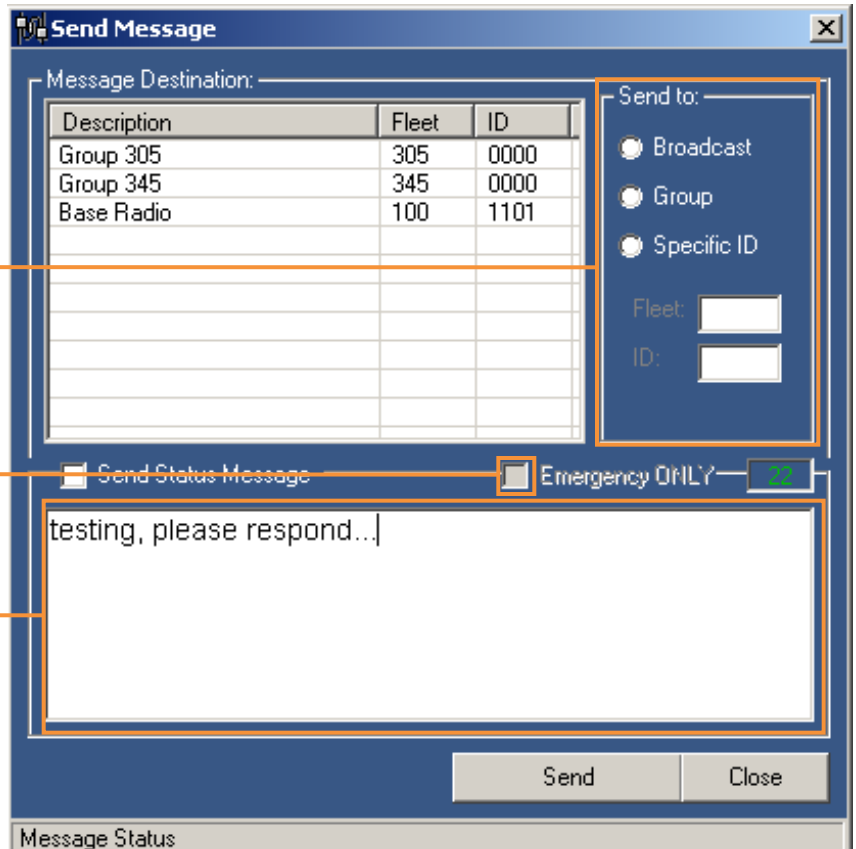
- Up to three radios connected simultaneously.
- Easy to use GUI
- Current call radio display (highlights last call)
- FleetSync ANI Call Log
- Programmable Unit buttons for easy access to PTT (specific ID's)
- One click channel selection along with Custom Channel Presets (10)
- Status Messaging
- Short and Long text messaging
- Radio Stun
- Password protected areas for Radio Stun and System Configuration.
- Emergency Display and Alert (one click reply)
- User's profile showing preferences of individual users.
- Easy access to status of radios in the fleet
- New units are automatically added to the System



Specify if sending to specific ID, Fleet or Broadcasting over channel.

One click Emergency Call

Text Message area, automatically determines short or long message. (Color coded, turns green when switching to Long Message)



**LAST CALL PTT**  
Talk directly with the last person that called without having to search.

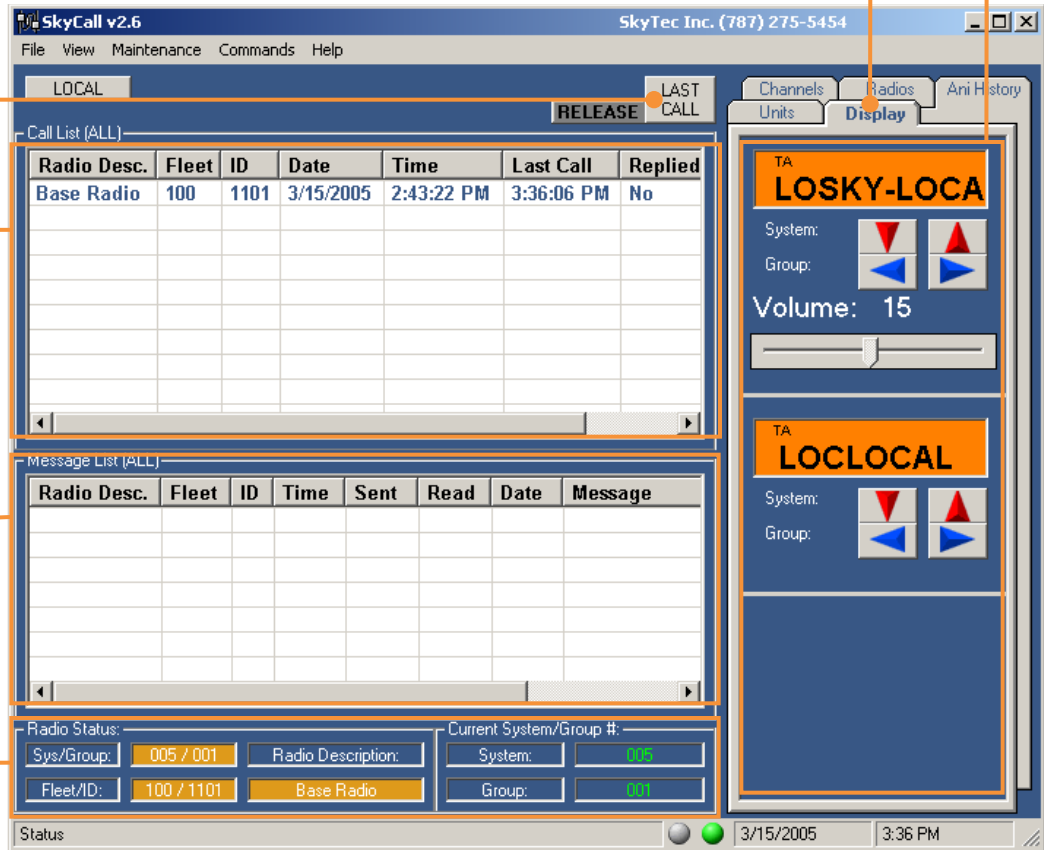
Tabbed display for switching views without losing of calls or messages.

Easy to use Radio Display and Controls

Call List, includes original first and last call recieved.

Messages List, display all messages recieved and trasmitted. Also display wether or not message has been read.

Highlighted and shows Fleet, ID, channel and system as the person speaks or tranmits.



## Technical Specifications

**Computer System Requirements:**

- Windows 98/Me/NT/2000/XP (2000/XP Recommended)
- 450 MHz or better
- 20 MB of hard disk drive space / 64MB RAM / CD ROM Drive/Mouse
- Super VGA color monitor or better / 1024 x 768 or higher resolution setting
- 1 Serial Port (for KCT-31 connection) / 1 USB Port (for hardware key) / Single PC use only
- Package Contents: CD ROM, Instruction Manual, Hardware Key

**Mobile Station Requirements:**

- 80-Series Mobile (Version 2 radio or later)
- KMC-9C Base station Desktop Microphone recommended
- FleetSync Enhanced Enabled (already factory installed except for 800/900 MHz products)
- Serial cable interface



**SKYTEC, INC.**  
Bldg E-1  
500 Royal Industrial Park  
Cataño, PR 00962-6346  
Tel: (787) 275-5454  
E-mail: sales@skytecpr.com  
www.skytecpr.com



FleetSync™ is a registered trademark of Kenwood Communications Corporation.  
Copyright 2005 by SkyTec, Inc., all rights reserved. SkyTec is committed to a policy of constant improvement in features, quality and performance. To accommodate these improvements, all technical information and specifications are subject to change without notice. Custom options and configurations are available, if needed.