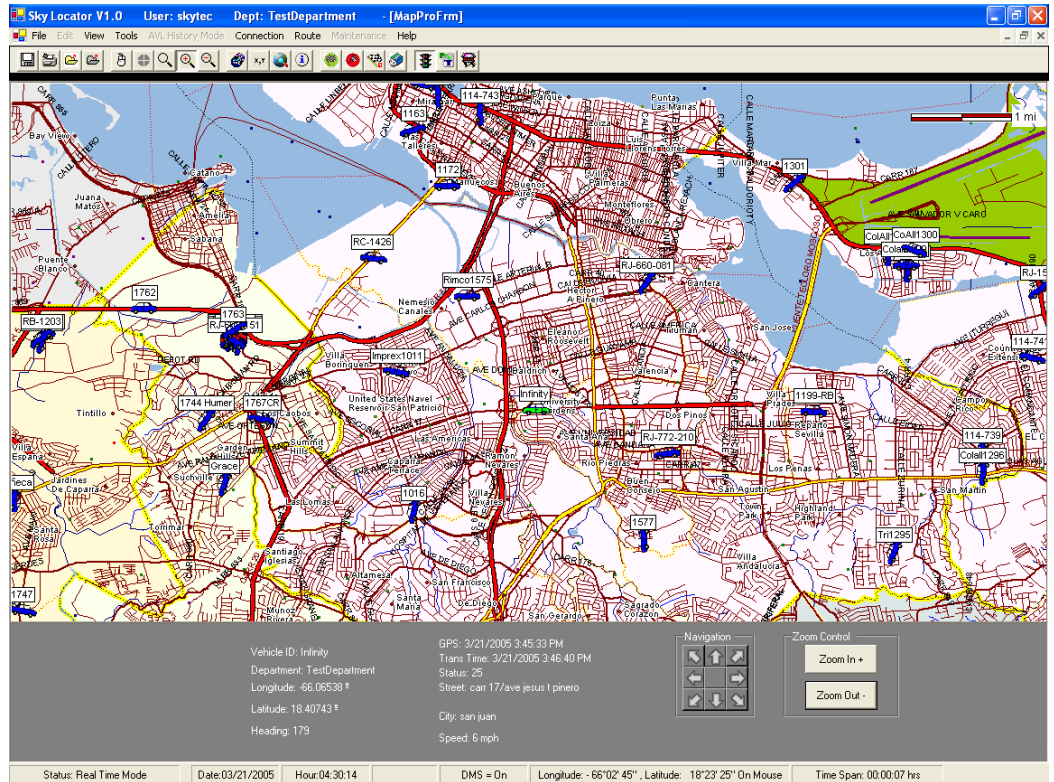


Skylocator is used to track vehicles in real time with the use of digital maps and with a variety of events where it indicates the status of the unit and its exact position.

## Technical Specifications

### Computer System Requirements:

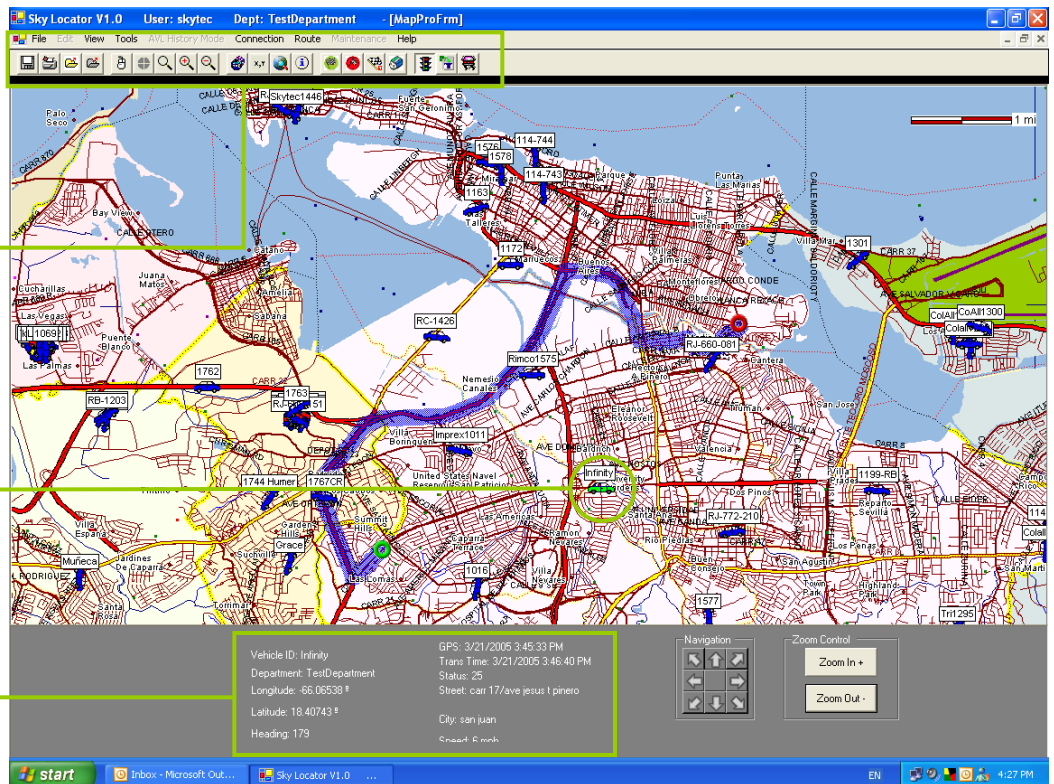
- Windows XP Professional
- Processor Intel 4 2.8 Ghz
- Memory RAM 512MB
- Hard Disk 80 GB (Report)
- 40 GB (Locator Only)
- Network Card 10/100 mbps
- Sound Card (Alert System)
- SVGA Monitor 17"



## Navigation Tools

## Active Vehicle

## Vehicle Information



## Vehicle Control

The software gives the user a complete and detailed list of the users units and detailed information.

The screenshot shows a software window titled 'Vehicle Control' with a menu bar containing 'Mark Selection', 'Clear Selection', 'Mark All', 'Clear All', and 'Setup'. Below the menu bar are two dropdown menus: 'Vehicle Type' set to 'All Types' and 'Status' set to 'Show All'. The main area contains a table with the following columns: Visible, VehUsrId, Longitude, Latitude, Speed, GPSTime, and Status. The table lists several vehicles, with two rows highlighted in red: 'RJ-772-214' and '1777'. Below the table are buttons for 'Trace' and 'Clear Trace', a 'Column:' dropdown, and a 'Show Active Only' checkbox. At the bottom are 'Apply' and 'Close' buttons.

Visible	VehUsrId	Longitude	Latitude	Speed	GPSTime	Status
<input checked="" type="checkbox"/>	1200-RB	-66.0392	18.25753	0	03/21/2005 15:39:27	IG OFF
<input checked="" type="checkbox"/>	RJ-1546	-65.89341	18.00135	38	03/21/2005 15:38:44	Time Distance
<input checked="" type="checkbox"/>	Muñeca	-66.14415	18.3942	0	03/21/2005 15:38:39	IG OFF
<input checked="" type="checkbox"/>	RJ-772-216	-66.16462	18.35787	0	03/21/2005 15:38:06	IG OFF
<input checked="" type="checkbox"/>	RJ-772-218	-66.61061	18.01654	0	03/21/2005 15:37:55	IG ON
<input checked="" type="checkbox"/>	RJ-1559	-66.17923	18.38522	12	03/21/2005 15:37:35	Time Distance
<input checked="" type="checkbox"/>	RJ-1555	-66.23439	18.30318	23	03/21/2005 15:37:01	Time Distance
<input checked="" type="checkbox"/>	RJ-772-214	-66.06064	18.35766	0	03/21/2005 15:36:16	Stop
<input checked="" type="checkbox"/>	1777	-66.14999	18.42857	0	03/21/2005 15:36:09	Stop

### Features:

- Works on both desktops and notebooks
- Real-time monitoring/tracking of an entire fleet on a digital map
- Displays precise vehicle information: vehicle ID, latitude, longitude, heading, speed, status, city and closest street (Reverse GeoCoding)
- Address search utility – streets, avenues, highways, zip codes and area codes
- Detailed and digitalized maps of the United States and Puerto Rico. (Central and South America optional)
- Records location data for future analysis or statistics using optional SkyReport
- Extensive pan and zoom utility with automatic tracking of targeted vehicle
- Simultaneous tracking of vehicle using multiple communication protocols, from radio to cellular
- Unit status display window with multiple selectable events (i.e. 'Engine On' or 'Engine Off')
- Monitor the transactions of each unit and obtain event update (Transaction Monitor)

### Benefits:

- Complete portability, even in your car
- Know precise location and status of vehicles in real-time
- No need to rely on delayed second-hand information from dispatcher
- Reduce response time
- Improve driver's responsibility and safety
- Dispatch vehicles to exact incident/job site based on their true location and status
- Reduce overtime
- Reduce route overlapping
- Print map and vehicle positions instantly. Also used for reports
- Calculate a route using a starting point and ending point. SkyLocator shows you the shortest route from point A to point B or the most direct route, etc.
- Increase productivity of fleet
- Dramatically reduce operation costs, including vehicle maintenance
- Use historic data to evaluate driver performance, route efficiency, cost, etc.
- Receive information of specific points in map
- Customized points of interest



**SKYTEC, INC.**  
 Bldg E-1  
 500 Royal Industrial Park  
 Cataño, PR 00962-6346  
 Tel: (787) 275-5454  
 E-mail: sales@skytecpr.com  
 www.skytecpr.com

